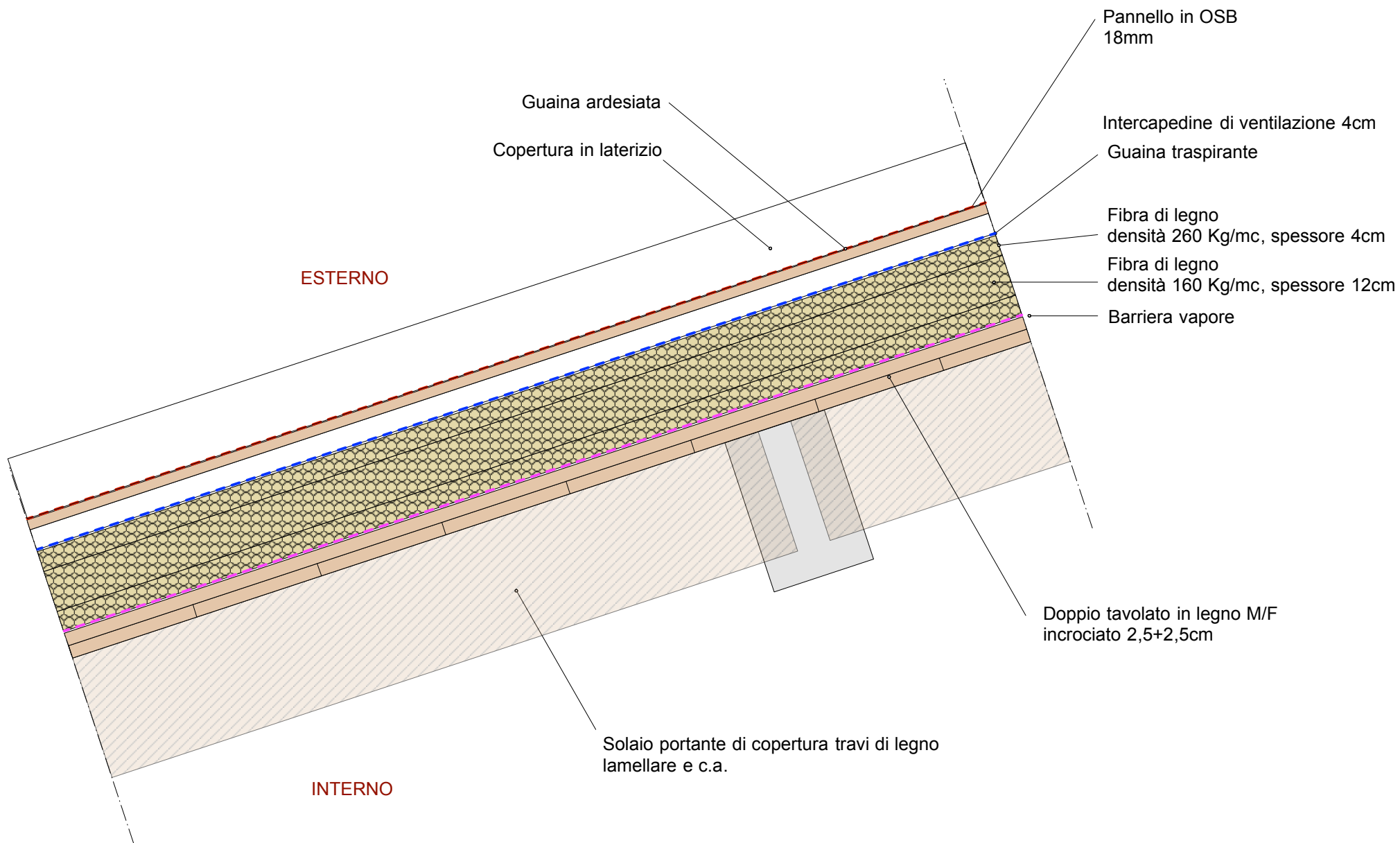


C1

Particolare COPERTURA

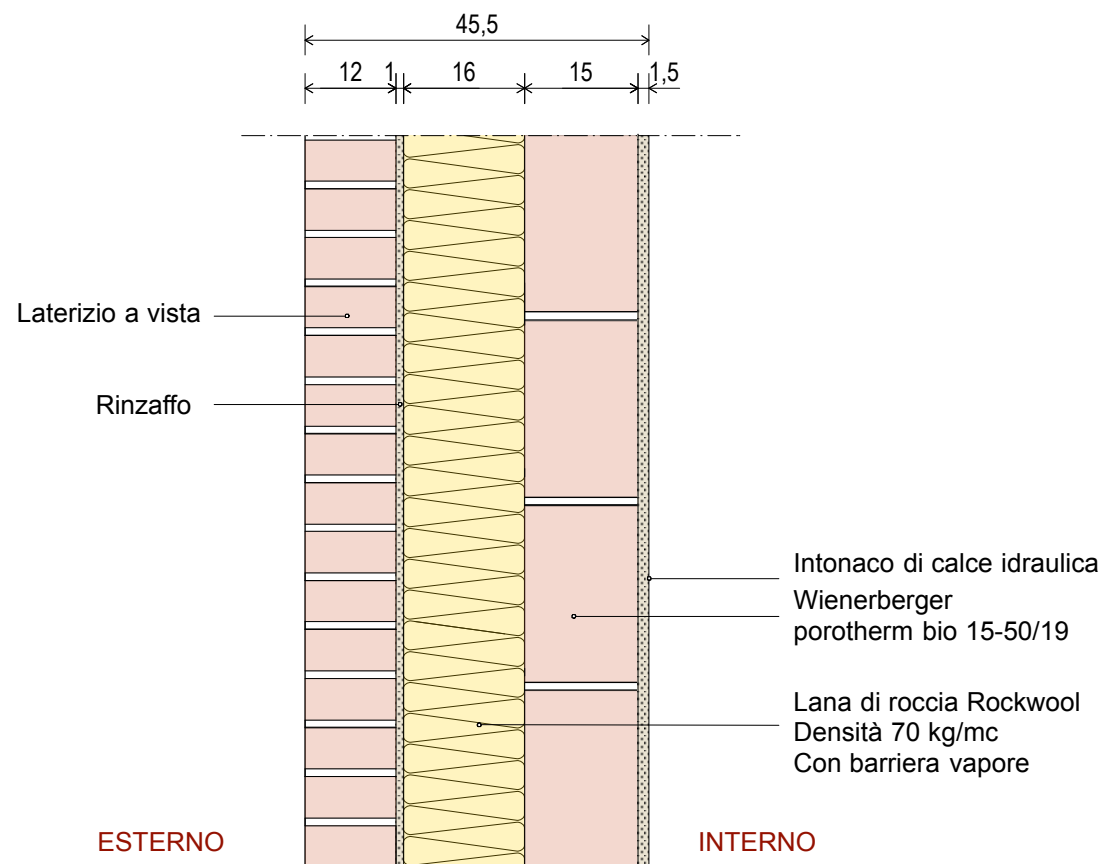
Scala 1:10



M1

Particolare MURATURE ESTERNE

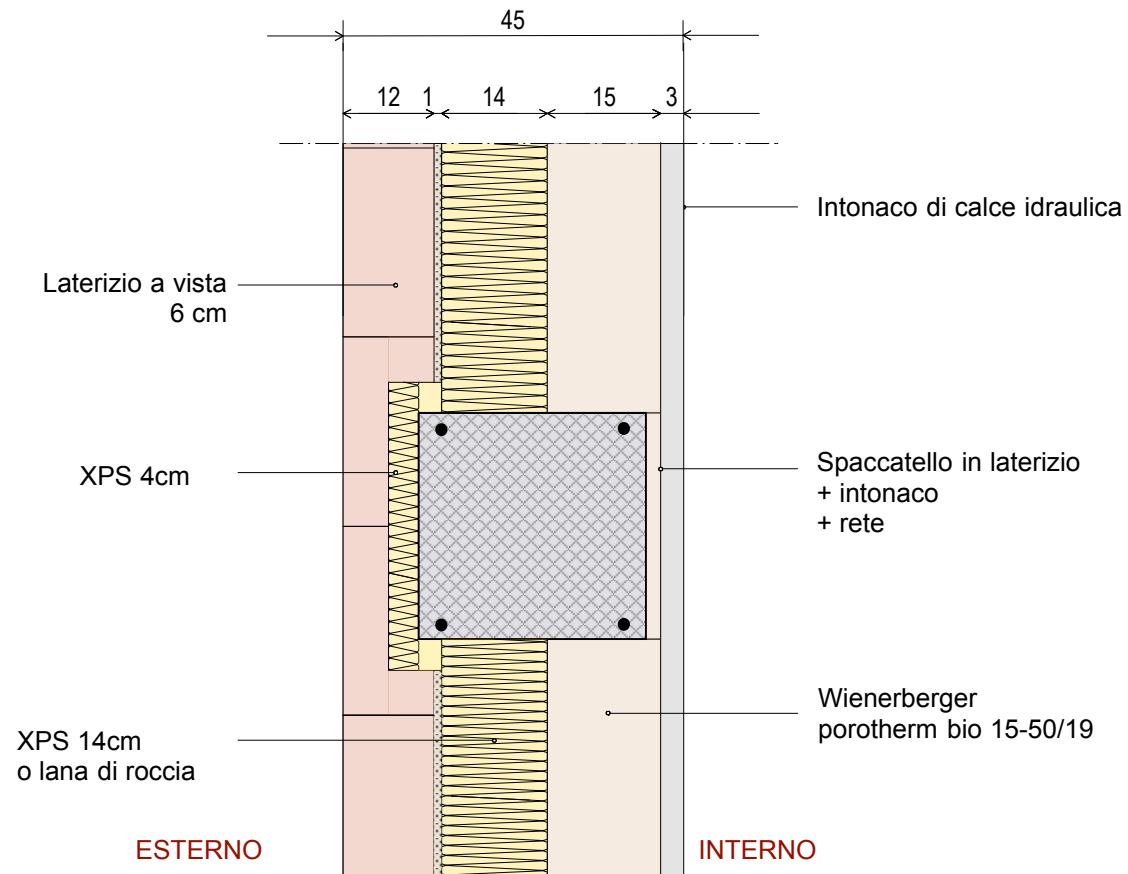
Scala 1:10



M2

Particolare MURATURE ESTERNE NODO PILASTRO

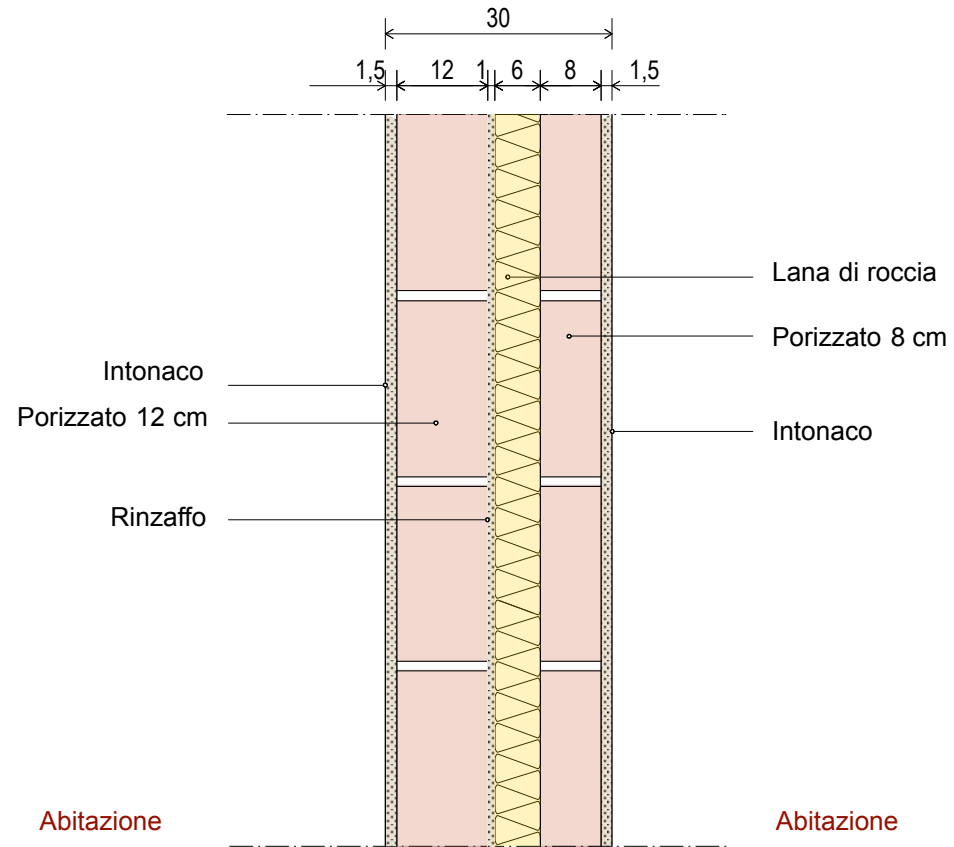
Scala 1:10



M3

Particolare MURO DIVISORIO FRA UNITA' IMMOBILIARI

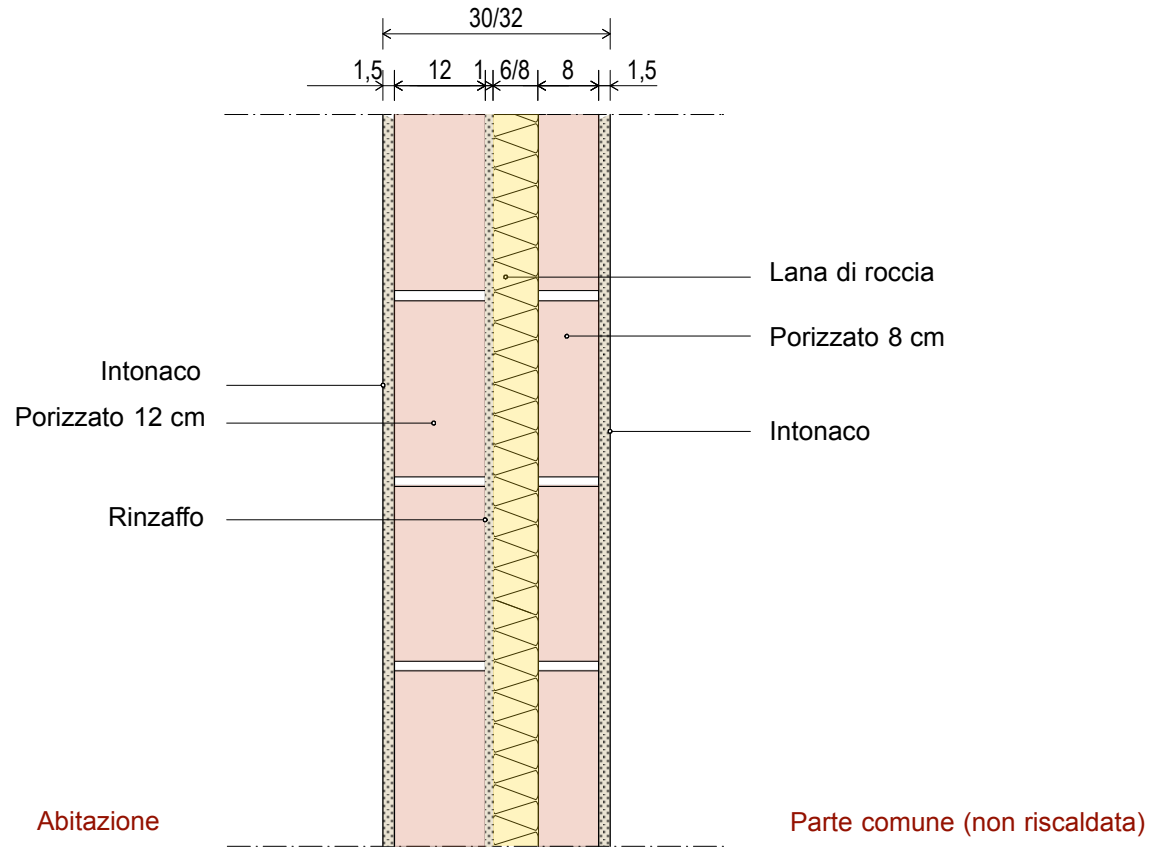
Scala 1:10



M4

Particolare MURO DIVISORIO FRA ABITAZIONE E PARTI COMUNI (particolare A)

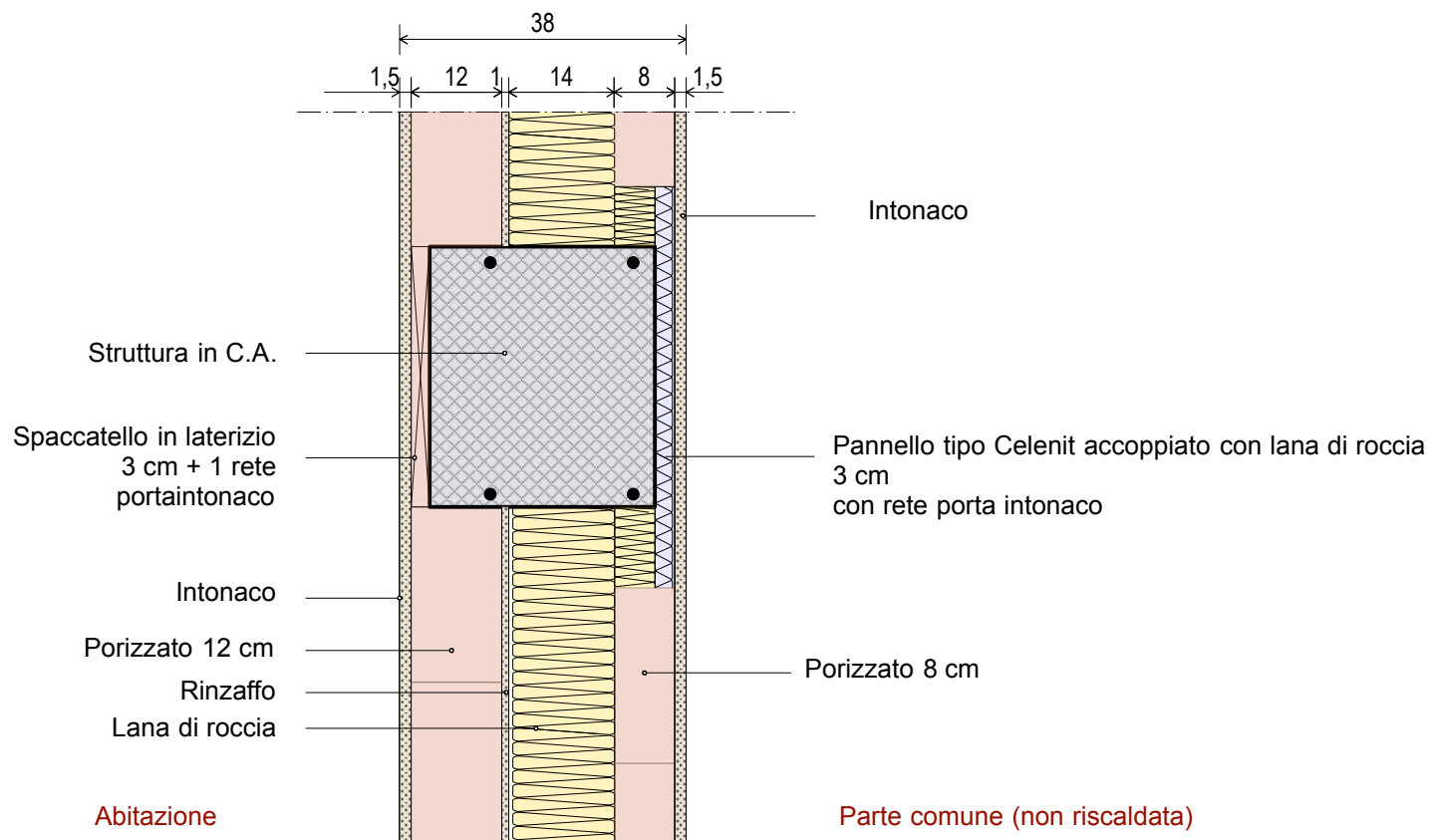
Scala 1:10



M5/a

Particolare MURO DIVISORIO/PILASTRO C.A. FRA ABITAZIONE E PARTI COMUNI (particolare B)

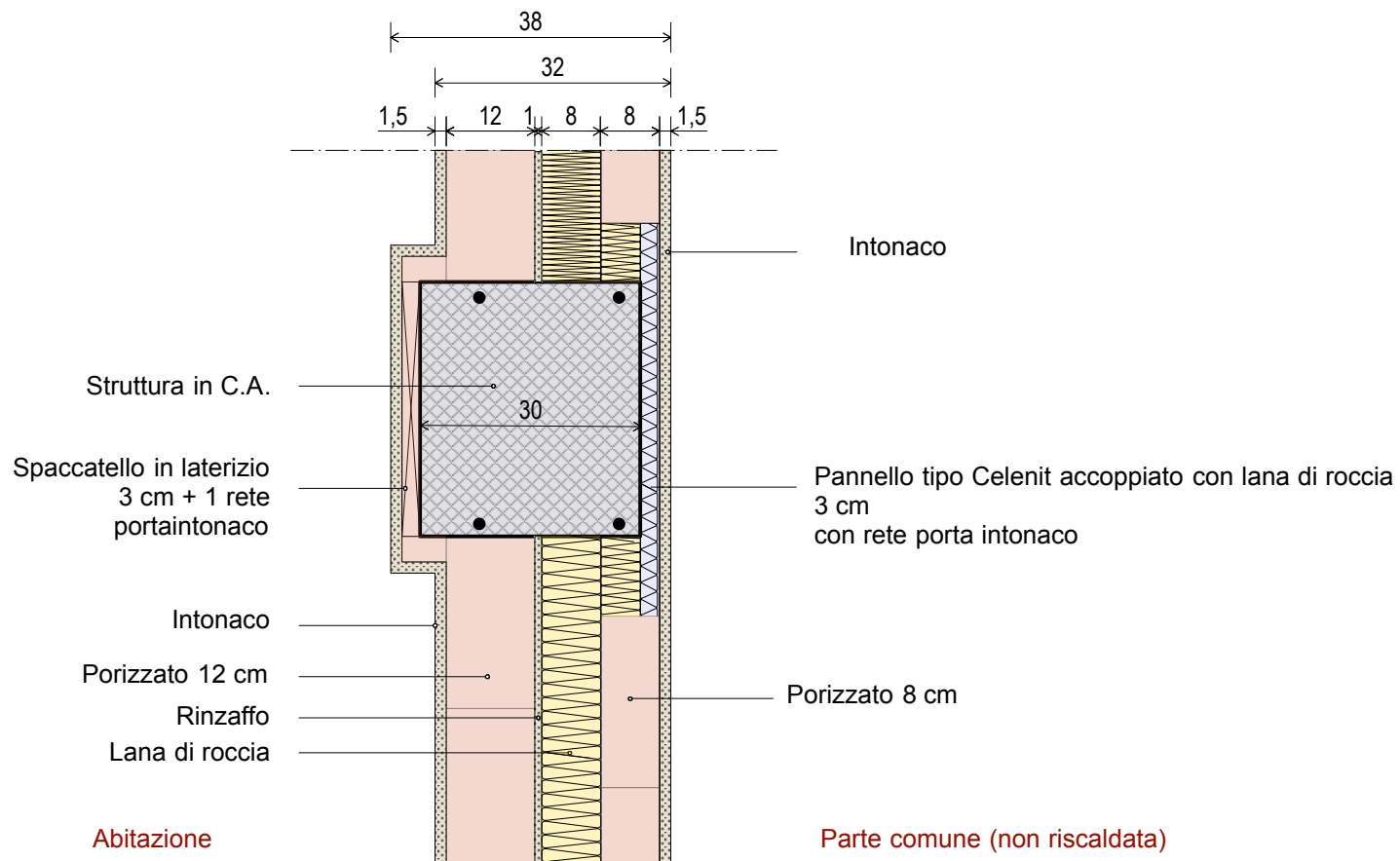
Scala 1:10



M5/b

Particolare MURO DIVISORIO/PILASTRO C.A. FRA ABITAZIONE E PARTI COMUNI (particolare B)

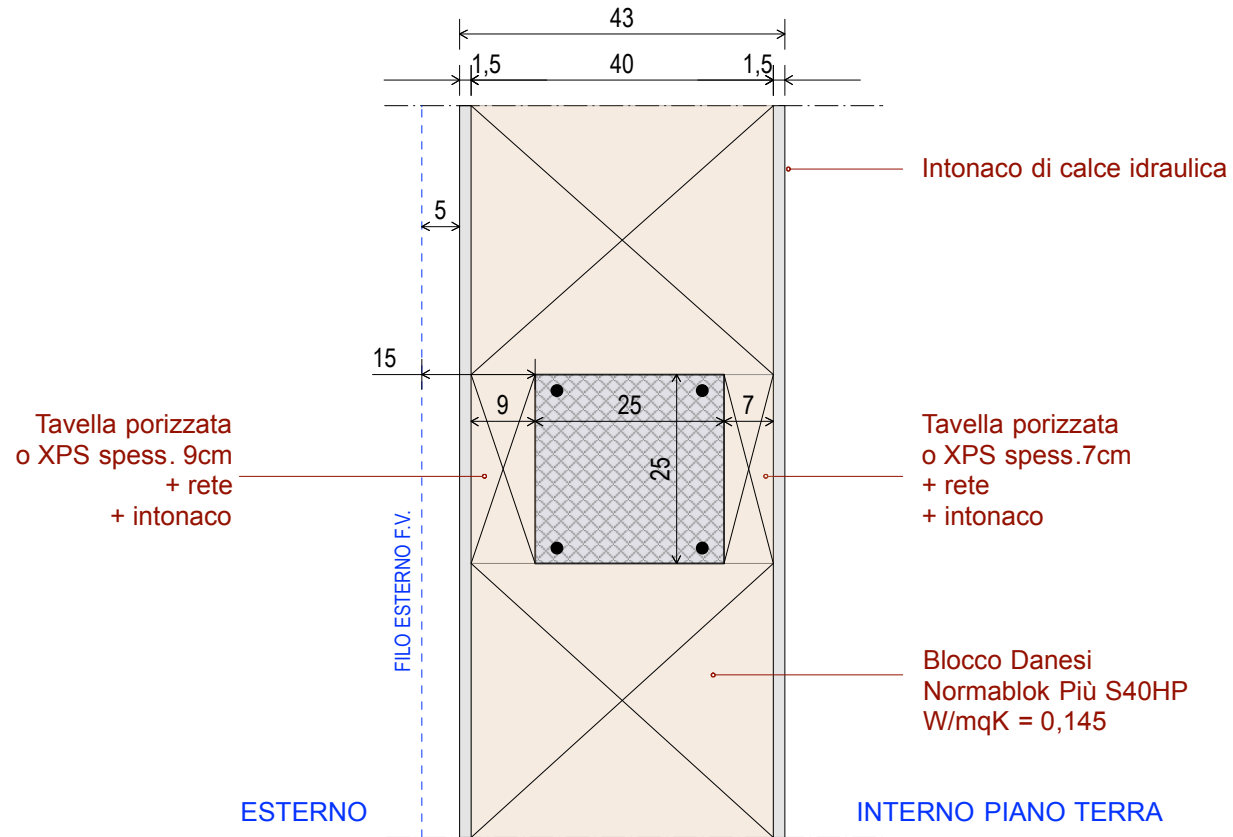
Scala 1:10



M6

Particolare MURATURE ESTERNE (PIANO TERRA) NODO PILASTRO

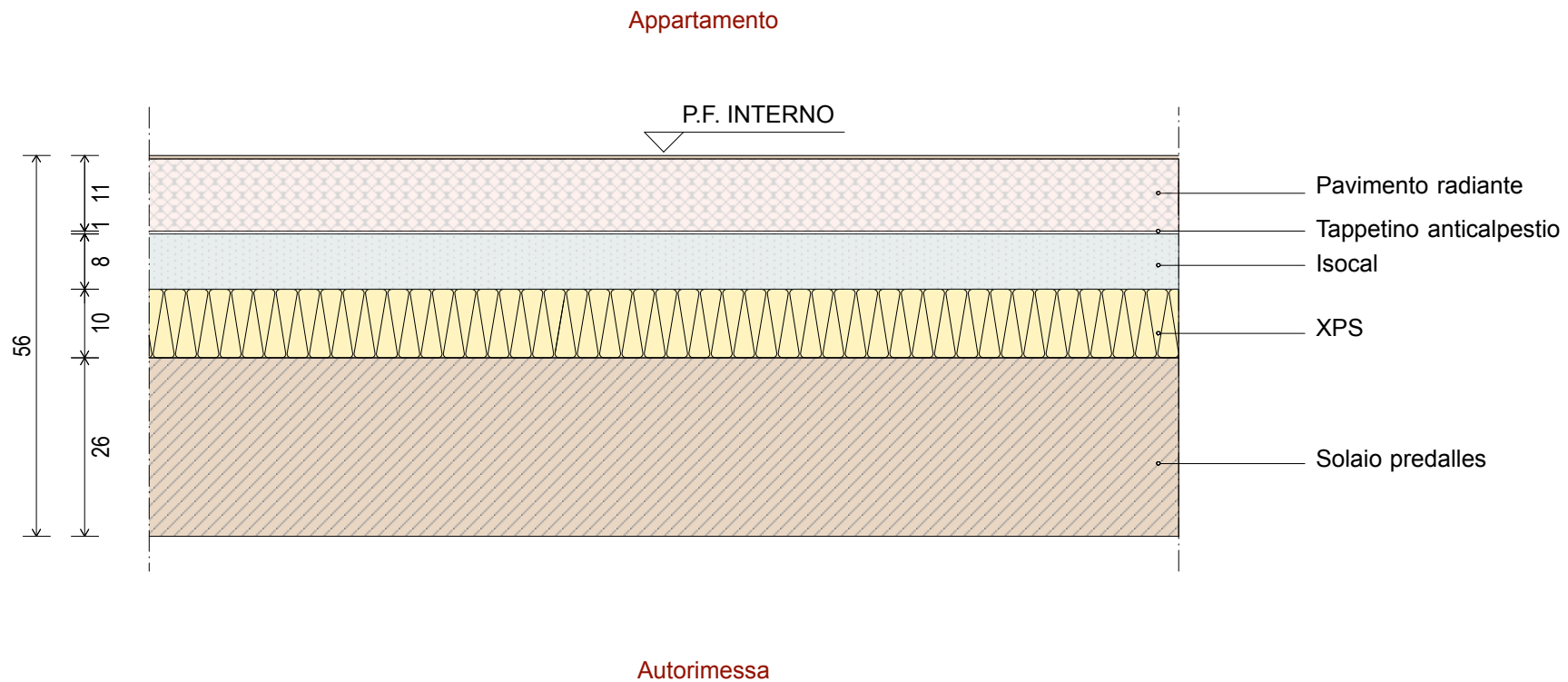
Scala 1:10



S1

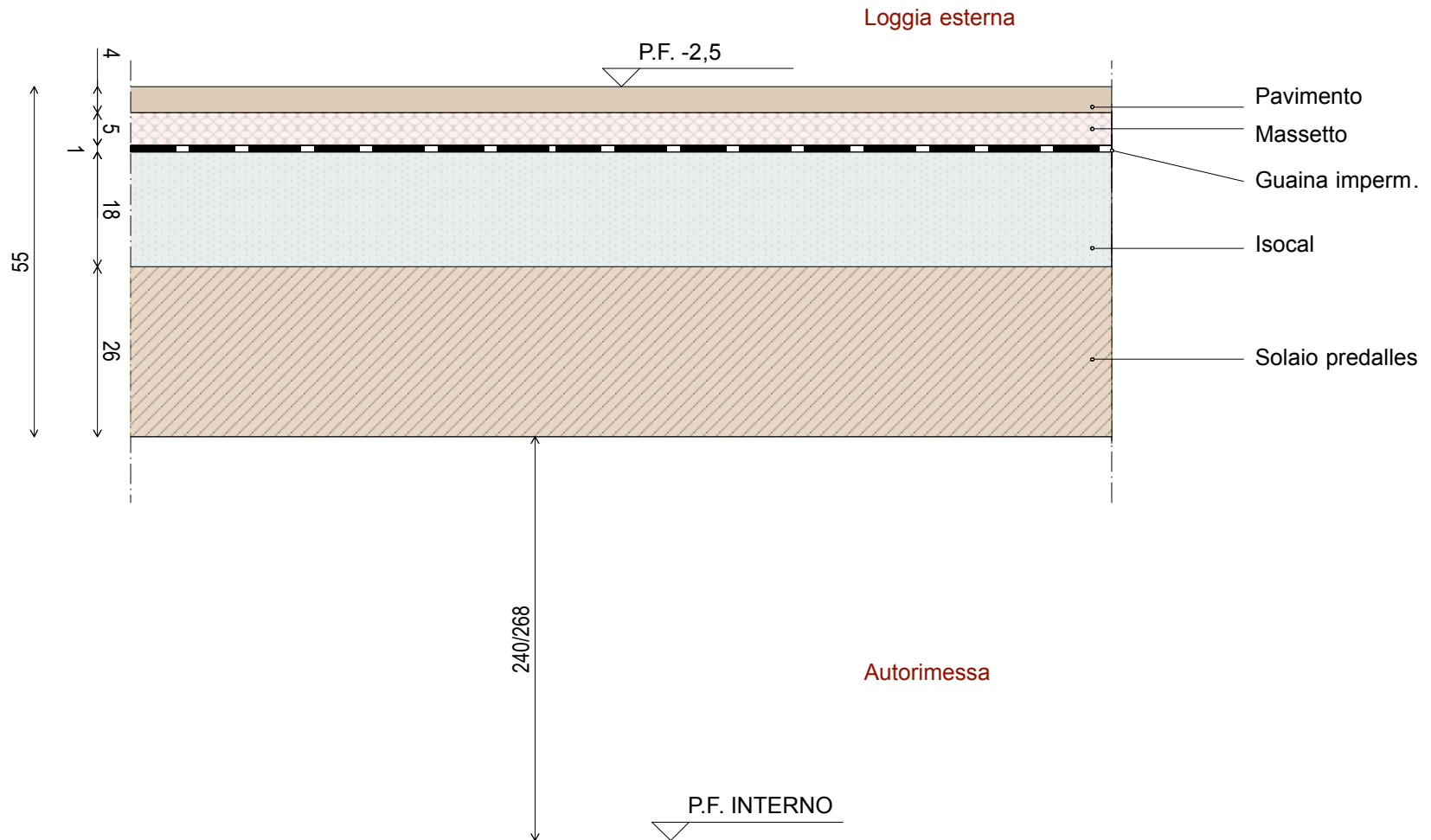
Particolare SOLAIO FUORI TERRA tipo A (piano terra)

Scala 1:10

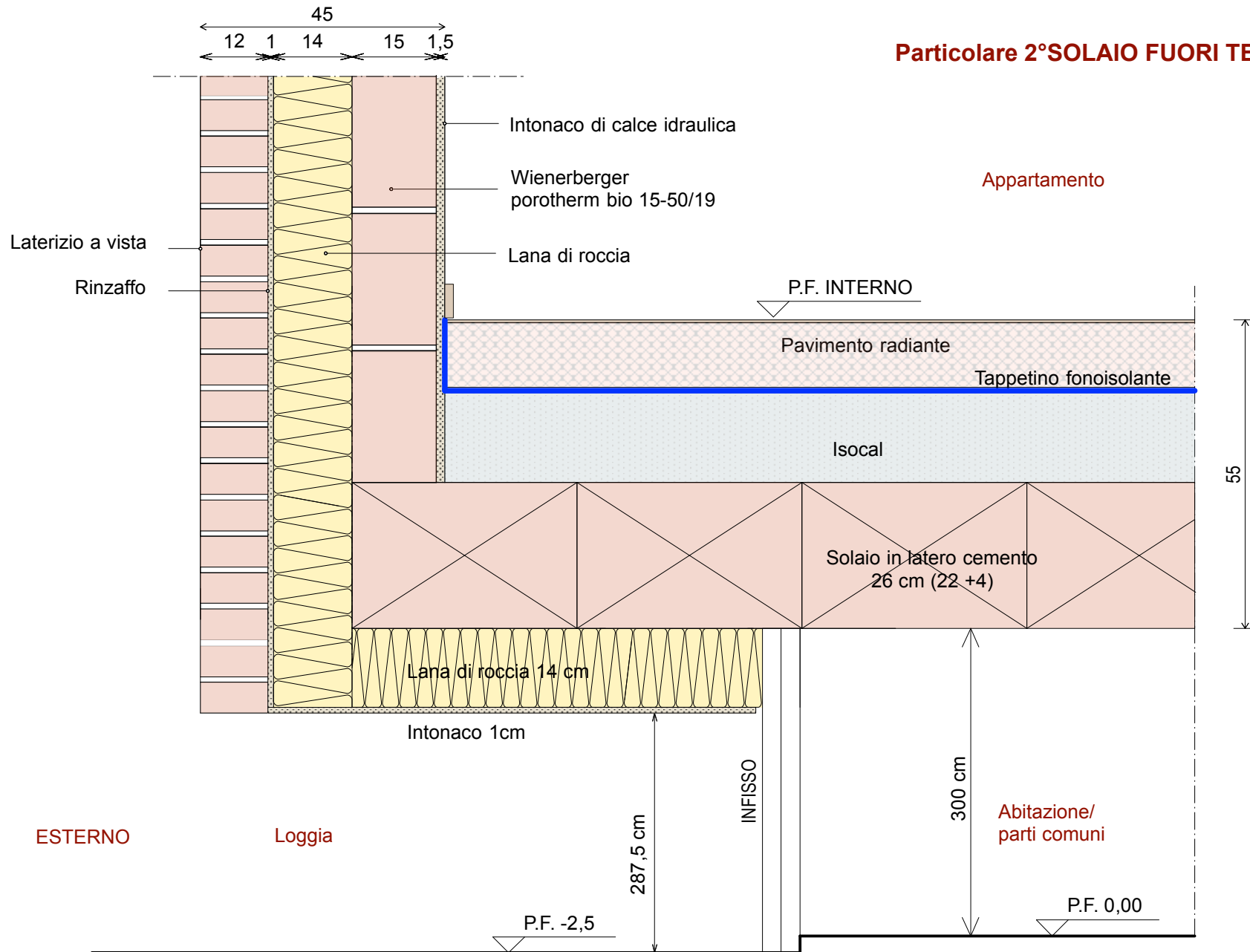


S2

**Particolare
1° SOLAIO FUORI TERRA/LOGGIA ESTERNA
Scala 1:10**



Particolare 2° SOLAIO FUORI TERRA tipo A (piano 1°)
Scala 1:10



ESTERNO

Loggia

Appartamento

Abitazione/
parti comuni

45
12 1 14 15 1,5

P.F. INTERNO

Pavimento radiante

Tappetino fonoisolante

Isocal

Solaio in latero cemento
26 cm (22 +4)

Lana di roccia 14 cm

Intonaco 1cm

INFISSO

287,5 cm

55

300 cm

P.F. -2,5

P.F. 0,00

S4

Particolare SOLAIO DI INTERPIANO

Scala 1:10

